

# EnterprisePM

property management



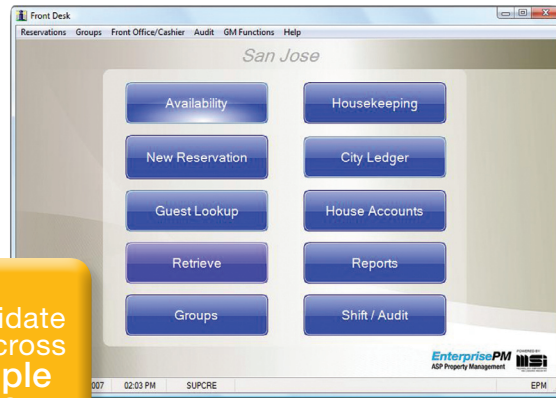
www.msolutions.com  
info@msolutions.com  
800.331.7890

## EnterprisePM ASP PROPERTY MANAGEMENT

Your staff will appreciate the easy navigation



consolidate data across multiple sites



A single database for all of your properties with consolidated profiles and reporting, centralized billing and sales functions, and an easy to navigate front end so intuitive that your staff will interact with your guests instead of the computer! Enterprise PM uses Microsoft's .NET framework with advantages in security, deployment and interoperability built in. Enterprise PM was designed for multiple properties with a common vision. One click deployment and agile development make it possible for MSI to partner with you

to create the environment you want – from standardizing your operational procedures to guest services delivered across all of your sites.

One touch display drill down includes critical statistics with a twist – all of the data is available for a single touch

automatic updates from one location

Intelligent design with clean forms

create the environment you want

## EnterprisePM architecture

The .NET Framework is Microsoft's managed code programming model for building applications that have visually stunning user experiences, seamless and secure communication, and the ability to model a range of business processes. The .NET framework was built with basic features that make it easy to deploy centrally administrated applications. Click once deployment completes a very tight configuration.

Interfaces to Call Accounting, PBX systems, Voice Mail, Electronic Key lock, Movie and InRoom Entertainment, Point of Sale, Central Reservations, Business Intelligence and more.

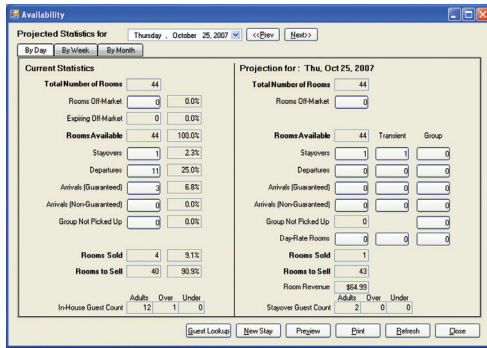


## deployment options

MSI offers two deployment models for Enterprise PM along with MSI's proven ability to customize the configuration to meet the varied needs of the hotel industry. The hosted model offers advantages in security, support and management company access to data. A traditional client-server deployment is available, with this option the server and database are located on-site. With either solution Enterprise PM provides updates to the property software that occur automatically from a central location; an advantage in time savings and in continuity across multiple properties.

## EnterprisePM ASP PROPERTY MANAGEMENT ] continued

### EnterprisePM features



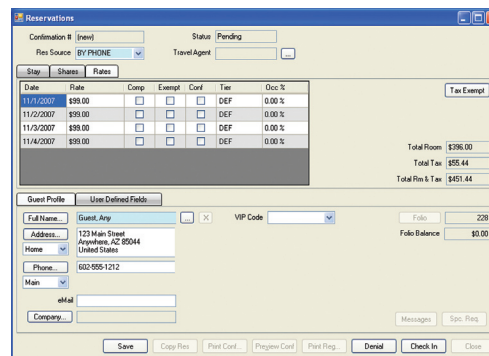
- **One touch availability display** includes critical statistics with a twist – data is available for a single touch for a list. Click on expected arrivals, stayovers, departures or rooms off market to see an instant list. From the list you can drill down further; select a guest to access the reservation.
- **End of Day Report sets** allow you to set up what reports you want and where you want them to go. Email or print to a local or network printer, two copies or no copies – this feature will insure information is where you need it when you want it.
- Enterprise PM is an **intelligent design** with clean form format and a single button to see more, such as full address. The benefit to the design is that it is easy to see information with a quick glance, so your personnel won't be squinting at a computer when they are interacting with guests.



One click deployment and agile development make it possible for MSI to partner with you to create the environment you want

MSI meets the varied needs of the hotel industry utilizing Enterprise PM along with MSI's proven ability to customize any configuration

- **Rates are simple to create and modify**, fill out a simple form and the rates populate for the days of the week, seasonal periods and number of persons. Want to change one day? Highlight the room type/day and enter the new rate!
- The Booking Rules menu is an **easy way to apply your revenue management strategy** by room type or by rate code, or a combination of both. Restrictions, such as minimum length of stay or close to arrival can be applied, and allocations assigned.
- The **city ledger system tracks all of your accounts receivable** with a tie to global billing, based on management company preference.



clean  
easy  
to read  
design

drill  
down  
for details

MSI PRODUCTS 2008

**WinPM**  
Property Management

**WinSAM**  
Sales & Catering

**SalesDriver**  
Contact Management

**EnterprisePM**  
ASP Property Management

**NovaPLUS**  
PROPERTY MANAGEMENT

**Place Point**  
Restaurant Point of Sale

**The Helm**  
Business Intelligence

**Web Booking ENGINE**  
Internet Reservation Booking

**DOSPM**  
MSI's legacy product, find out how easy your migration to WinPM or Enterprise PM can be.

7600 N. 15th St.  
Suite 250  
Phoenix, AZ 85020

800.331.7890  
602.870.4200  
Fax 602.861.3711