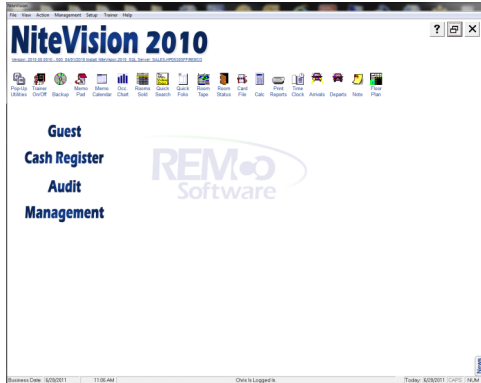


# NiteVision™

## Property Management System



With NiteVision, our commitment has always been to design hospitality software that is powerful, reliable, affordable, flexible, and easy to use. NiteVision is preferred by many of the most prestigious resorts, country clubs, and hotels worldwide, with a rock-solid foundation built upon the innovative Microsoft SQL Server technology and the unwavering commitment to 24 hour-a-day, 365 day-a-year customer support.

NiteVision combines the best of both worlds--affordability for properties of all sizes, along with the peace of mind which comes from 25+ years of leadership in hospitality and hotel reservation software. NiteVision provides properties the ability to customize the hospitality and hotel reservation software to their specific operation, thus optimizing the system's overall benefits. Additionally, its intuitive interface design and work flow allow even the most advanced features to be utilized with relative ease.

### General

- Uses Microsoft SQL Server data engine
- Multiple security levels are supported
- Outgoing email message capable
- Full function training mode
- Touch-screen compatible

### Rooms/Room Types

- Display by room usage or by room type
- Alphanumeric room names
- Meeting/banquet room types
- Specify maximum guests by room type
- Multiple phone extensions
- Room usage reporting and auto balancing
- Housekeeping zones
- Smoking/non-smoking room designation
- Track maintenance issues and severity

### Accounting

- Restrict voids/reversals to specific logins
- Alphanumeric account numbers
- Percentage and flat tax support
- Unlimited direct bill customer accounts
- Move, delete, and undelete invoices
- Unlimited foreign currency calculators
- Defer payment of security deposits
- Automatic tax abatement and rebates
- Support for travel agent accounting

### Guest Functions

- Merge duplicate guest files
- User-defined retention of guest history
- Guest loyalty program
- Track preferred room information
- Detailed stay history

### Rates

- Daily, weekly, monthly, or custom
- Automatic re-rate and re-post on rate changes
- Specify whether a rate can be discounted
- Restrict rate overrides to specific logins
- Yield-management option included
- Contract rates
- Smart rate selection
- Rate and occupancy tier restrictions
- Unlimited rates by dates

### Night Audit

- Extend overdue departures
- Force close open shifts
- Automatic rate posting without duplicates
- Automatically process no shows
- Pre-define end of day reports

### Marketing

- Advanced package support
- Track market code, source of business
- Print mailing labels
- Daily, weekly, monthly stay revenue reports

### Group Sales

- Master folio billing
- Route specific charges to master folio
- Proposal, booked, and guaranteed statuses
- Hard and soft blocking of rooms
- Auto release room blocks by date

### Shortcut Keys

- W Displays blank guest worksheet
- G Displays Guest Search Screen
- C Displays Checked-In guests
- A Displays today's arrivals
- D Displays today's departures

### Other

- Employee time clock with reports
- Company association tracking
- Concierge card file with printable maps
- Change due calculator
- Support for reservation inquiry
- Pre-post entire guest stay
- ZIP code editor
- Classify a guest as undesirable
- Inventory item availability and posting



# NiteVision™

## Interfaces & Modules

### Call Accounting

Call Accounting module automatically posts telephone charges to the appropriate guest folio. The full Call Accounting system allows you to easily control and change the amount guests are charged for phone calls.

### PBX

PBX interface allows you to update your PBX system with guest information when a guest checks in or out. You can also control various PBX functions from NiteVision.

### Credit Card Processing

Credit Card Processing interface allows you to authorize and process both debit and credit card transactions from within NiteVision. Both high-speed Internet and Dial-up options available.

### Export Accounting

Export Accounting module exports financial information from NiteVision daily in a format that can be imported into the QuickBooks or AccPac accounting systems.

### Electronic Door Lock

Electronic Door Lock interface sends stay information directly to your electronic door lock system during guest registration. All you need to do is swipe the blank key cards.

### Central Reservations

Central Reservations interface allows you to automatically enter reservations from a central reservations processing center into NiteVision. This interface can handle both one-way and two-way communication.

### Call Posting

Call Posting module automatically posts telephone charges received from a third-party call posting unit directly to the appropriate guest folio. Charges for phone calls are configured in the third-party system.

### Check Verification

Check Verification interface dials into a check processor system and verifies the account number against a database of bad checks.

### Voice Mail

Voice Mail interface provides automated guest mailbox administration. The mailbox is turned on when the guest checks in, and cleared when the guest checks out.

### Point of Sale

Point of Sale interface allows you to post charges from a third-party remote point-of-sale terminal located in the restaurant, gift shop, or lounge directly to a guest's folio.

### Entertainment System

Entertainment System interface receives charges for guest movie rentals from your entertainment system and posts those charges directly to the appropriate guest folio.

### NiteLink Website Booking Engine

NiteLink website Booking engine allows guests to book reservations from the property website processing the transaction with two-way communication between the booking engine and NiteVision.

